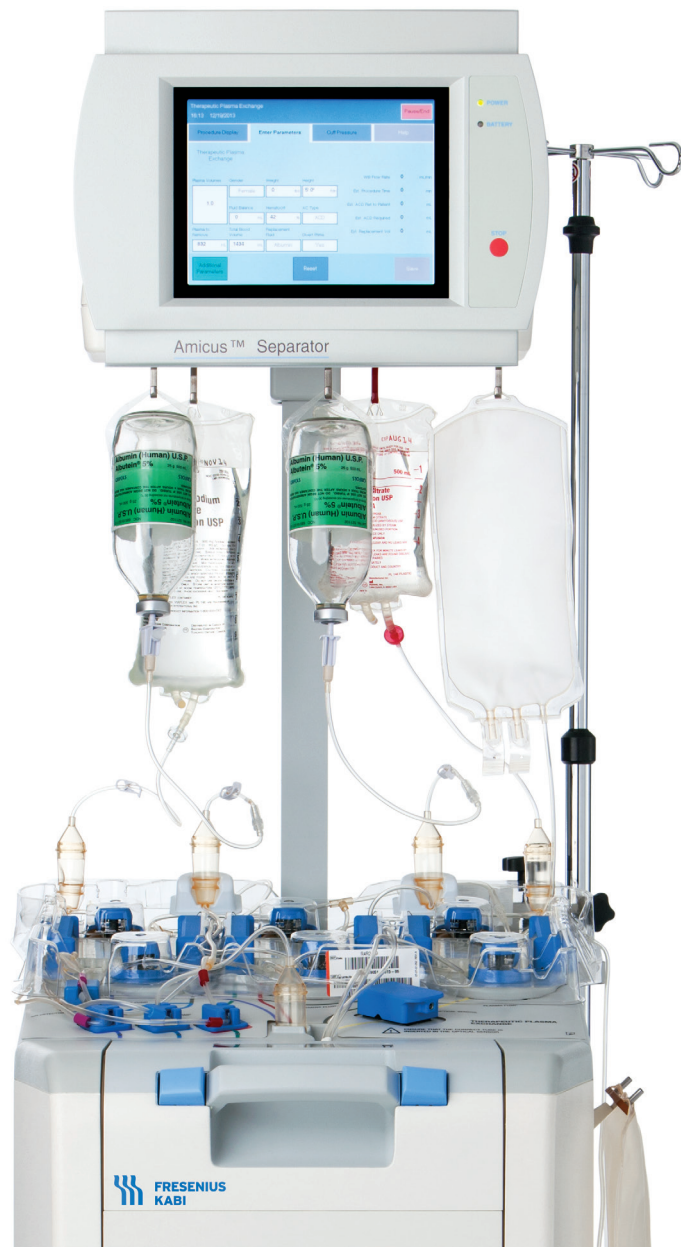


Amicus[®] Separator

Therapeutic Plasma Exchange (TPE)



DXT
DATA
MANAGEMENT
POWERED



Therapeutic Plasma Exchange at your fingertips

Plasma removal efficiency¹

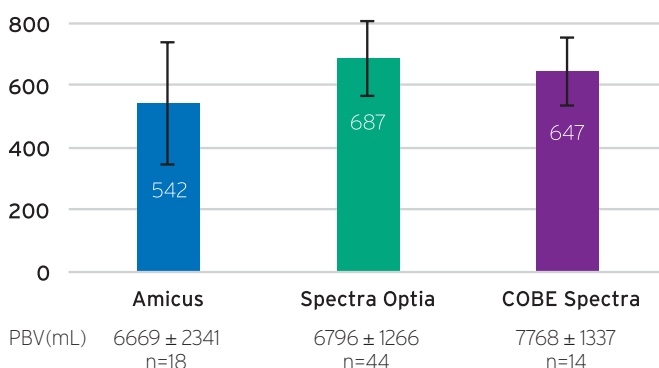
With the goal to remove plasma while sparing cells, the efficiency of a device impacts the amount of whole blood that must be processed to remove a target amount of plasma. Plasma removal efficiency (PRE) is the metric used to measure the amount of whole blood that must be processed to remove a targeted amount of plasma.¹

Amicus¹
Plasma Removal Efficiency

82%

81.9 ± 7.6

Anticoagulant to patient (mL)



Low levels of anticoagulant to the patient[†]

Low anticoagulant (AC) to the patient is a key element of our design. In this study, Amicus processed a similar amount of whole blood compared to Optia[®] but the quantity of AC used was lower, resulting in less AC to the patient.²

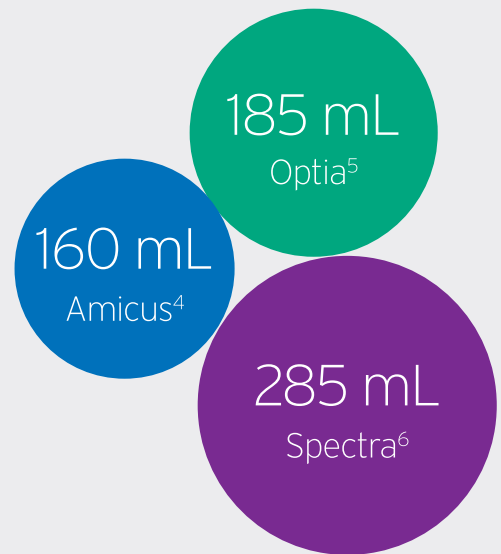
[†] Citrate was infused at different rates and ratios for each device in accordance with the manufacturer's instructions.

Providing care to patients

Low extracorporeal kit volume and custom priming

Amicus employs a kit design with an extracorporeal volume (ECV) of 160 mL.⁴ A low kit ECV helps to reduce the percent of patient total blood volume used to prime the kit.

In situations with a patient with lower total blood volume, Amicus offers a custom prime option that allows customization of settings to trigger an option to use an alternate source for priming the kit.



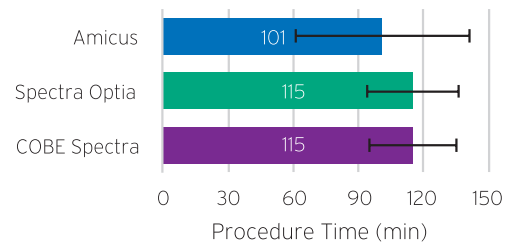
Platelet sparing

The design of Amicus keeps platelet loss low in a TPE procedure. In the Amicus TPE clinical trial, platelets in waste plasma was low, resulting in low patient platelet loss.³

2.3%
Patient
platelet loss (median)³

Comparable procedure times

We know procedure time is important to your patients and staff. In this study, Amicus demonstrated procedure times comparable to the other devices on the market.²



Balance fluids accurately

Keeping patients comfortable is key to the care you provide. With a real-time volume measurement approach through the use of a unique combination of weigh scales and pumps, Amicus delivers extremely high fluid accuracy.¹

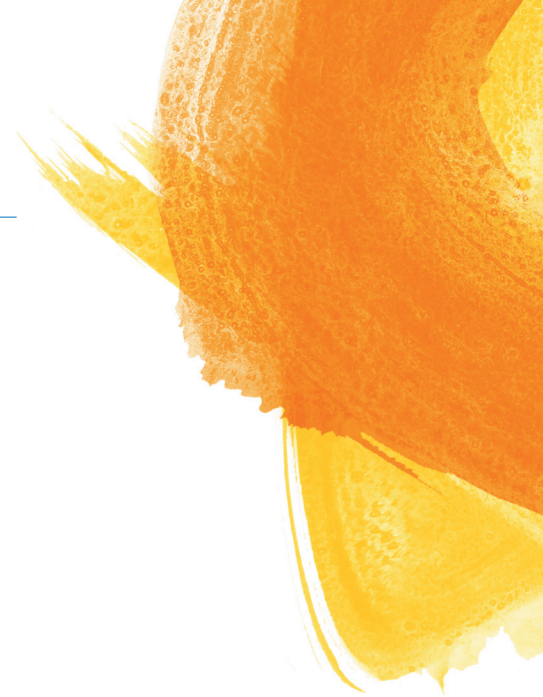
Auto-switching of replacement fluid

Utilizing the weight scales in conjunction with the replacement fluid pump, Amicus is able to recognize when a replacement fluid bag is empty and automatically switch fluids. This allows the operator to focus more on the patient.

99.8%
Fluid Balance
Accuracy¹

References

1. Winters JL et al. A multicenter evaluation of a new therapeutic plasma exchange procedure. *Transfusion*. 2013 Dec;53(12):3269-78.
2. Joan Cid et al. Comparison of plasma exchange procedures using three apheresis systems
3. FRCP 0210 Post Hoc Patient Platelet Loss TPE Clinical Trial Data, April, 2014.
4. Fresenius Kabi Operators Manual
5. Spectra Optia® Operators Manual TPE
6. COBE Spectra® Apheresis System • Essentials Guide



Together with healthcare professionals, we are committed to making a positive difference with our technologies, training and support.



Refer to the Instructions for Use and Operator's Manual for a complete list of warnings and precautions associated with the use of these products.

Copyright © 2022 Fresenius Kabi AG. All rights reserved.
All trademarks referred to are property of their respective owners.